

CD10 (7C7) monoclonal antibody

Catalog: MB3249

Host: Mouse

Reactivity: Human,Rat,Mouse

BackGround:

CD10 is a transmembrane type II molecule and functions as a metallo-peptidase requiring zinc. Specifically, CD10 cleaves 1-3 amino-terminal amino acids from peptides with a preference for neutral amino acids (valine, iso-leucine, phenylalanine, leucine or alanine). Involved in the degradation of atrial natriuretic factor (ANF). Displays UV-inducible elastase activity toward skin preelastic and elastic fibers.

Product:

Liquid in PBS containing 50% glycerol, 0.5% BSA and 0.02% sodium azide, pH 7.3.

Molecular Weight:

-

Swiss-Prot:

P08473

Purification&Purity:

Affinity Purified

Applications:

IHC: 1/50-1/100

Storage&Stability:

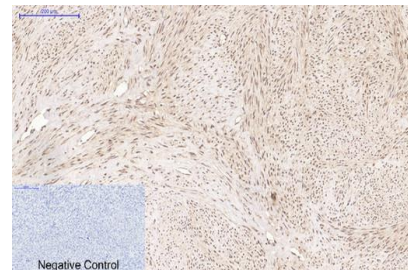
Store at 4 °C short term. Aliquot and store at -20 °C long term. Avoid freeze-thaw cycles.

Isotype:

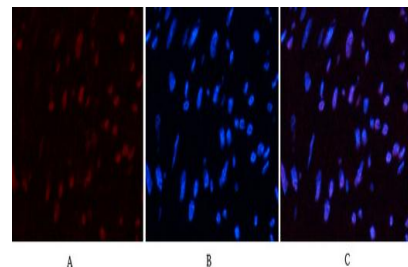
IgG1

DATA:

Immunofluorescence analysis of CD10 in Human uterus tissue using CD10 antibody, and DAPI.



Immunofluorescence analysis of CD10 in rat kidney using CD10 antibody, and DAPI.



Immunohistochemistry analysis of paraffin-embedded Human uterus tissue using CD10 antibody. High-pressure and temperature Sodium Citrate pH 6.0 was used for antigen retrieval. Negative control was used by secondary antibody only.

Immunohistochemistry analysis of paraffin-embedded rat kidney tissue using CD10 antibody. High-pressure and temperature Sodium Citrate pH 6.0 was used for antigen retrieval. Negative control was used by secondary antibody only.

Note:

For research use only, not for use in diagnostic procedure.

Bioworld Technology, Inc.

Add: 1660 South Highway 100, Suite 500 St. Louis Park, MN 55416, USA.

Email: info@bioworld.com

Tel: 6123263284

Fax: 6122933841

Bioworld technology, co. Ltd.

Add: No 9, weidi road Qixia District Nanjing, 210046, P. R. China.

Email: info@biogot.com

Tel: 0086-025-68037686

Fax: 0086-025-68035151