

**IKB beta (5H3) monoclonal antibody**

Catalog: MB3253

Host: Mouse

Reactivity: Human,Rat,Mouse

**BackGround:**

κB-beta a protein of the NF-κappa-B inhibitor family. Inhibits NF-κappa-B by complexing with and trapping it in the cytoplasm. However, the unphosphorylated form re-synthesized after cell stimulation is able to bind NF-κappa-B allowing its transport to the nucleus and protecting it to further IKBA- dependent inactivation.

**Product:**

Liquid in PBS containing 50% glycerol, 0.5% BSA and 0.02% sodium azide, pH 7.3.

**Molecular Weight:**

-

**Swiss-Prot:**

Q15653

**Purification&Purity:**

Affinity Purified

**Applications:**

IHC: 1/50-1/100

**Storage&Stability:**

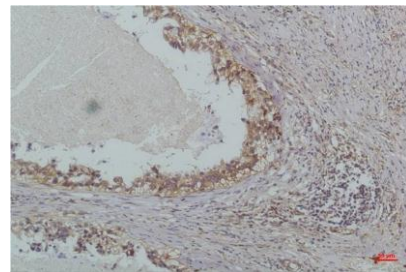
Store at 4 °C short term. Aliquot and store at -20 °C long term. Avoid freeze-thaw cycles.

**Isotype:**

IgG1

**DATA:**

Immunohistochemistry analysis of paraffin-embedded Human Lung Carcinoma using IKB beta antibody. High-pressure and temperature Sodium Citrate pH 6.0 was used for antigen retrieval.



Immunohistochemical analysis of paraffin-embedded Human tonsils using IKB beta antibody. High-pressure and temperature Sodium Citrate pH 6.0 was used for antigen retrieval.

**Note:**

For research use only, not for use in diagnostic procedure.

**Bioworld Technology, Inc.**

Add: 1660 South Highway 100, Suite 500 St. Louis Park, MN 55416, USA.

Email: [info@bioworld.com](mailto:info@bioworld.com)

Tel: 6123263284

Fax: 6122933841

**Bioworld technology, co. Ltd.**

Add: No 9, weidi road Qixia District Nanjing, 210046, P. R. China.

Email: [info@biogot.com](mailto:info@biogot.com)

Tel: 0086-025-68037686

Fax: 0086-025-68035151