

Acetyl-Alpha Tubulin (Lys40) (6B5) monoclonal antibody

Catalog: MB3345

Host: Mouse

Reactivity: Human,Rat,Mouse

BackGround:

TUBA1A Tubulin is the major constituent of microtubules. It binds two moles of GTP, one at an exchangeable site on the beta chain and one at a non-exchangeable site on the alpha-chain.

Product:

Liquid in PBS containing 50% glycerol, 0.5% BSA and 0.02% sodium azide, pH 7.3.

Molecular Weight:

Calculated MW: 50 kDa; Observed MW: 50 kDa

Swiss-Prot:

P68363

Purification&Purity:

Affinity Purified

Applications:

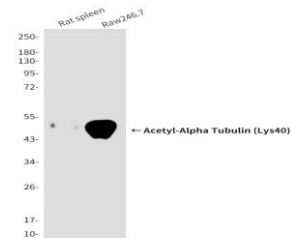
WB: 1/500-1/1000 IHC: 1/50-1/100

Storage&Stability:

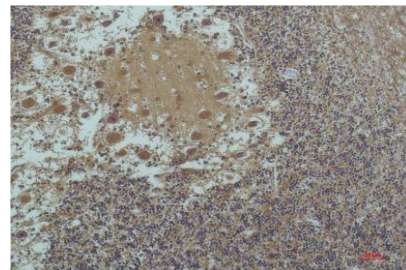
Store at 4 °C short term. Aliquot and store at -20 °C long term. Avoid freeze-thaw cycles.

Isotype:

IgG1

DATA:

Western blot analysis of Acetyl- α -Tubulin in rat spleen, Raw246.7 lysates using Acetyl- α -Tubulin antibody.



Western blot analysis of AcetylAlpha Tubulin in 293, C6 lysates using Acetyl- α -Tubulin antibody.

Immunohistochemistry analysis of paraffin-embedded Human Brain Tissue using α -tubulin antibody. High-pressure and temperature Sodium Citrate pH 6.0 was used for antigen retrieval.

Note:

For research use only, not for use in diagnostic procedure.

Bioworld Technology, Inc.

Add: 1660 South Highway 100, Suite 500 St. Louis Park, MN 55416, USA.

Email: info@bioworld.com

Tel: 6123263284

Fax: 6122933841

Bioworld technology, co. Ltd.

Add: No 9, weidi road Qixia District Nanjing, 210046, P. R. China.

Email: info@biogot.com

Tel: 0086-025-68037686

Fax: 0086-025-68035151