

## LGR5 (9E10) monoclonal antibody

Catalog: MB8017

Host: Mouse

Reactivity: Human, Mouse, Rat

### BackGround:

G protein-coupled receptors (GPCRs), also designated seven transmembrane (7TM) receptors or heptahelical receptors, interact with G proteins (heterotrimeric GTPases) to synthesize intracellular second messengers, such as diacylglycerol, cyclic AMP, inositol phosphates and calcium ions. Their diverse biological functions range from vision and olfaction to neuronal and endocrine signaling and are involved in many pathological conditions. LGR5 (leucine-rich repeat-containing G protein-coupled receptor 5), also known as GPR49 or GPR67, is a 907 amino acid multi-pass membrane protein that contains 17 leucine-rich repeats and belongs to the G protein-coupled receptor family. Expressed in placenta, skeletal muscle and spinal cord, LGR5 functions as an orphan receptor that is thought to play an important role in embryonic growth control and cellular differentiation. Overexpression of LGR5 is associated with increased tumor susceptibility and malignant transformation, implicating LGR5 as a potent tumor-inducing protein.

### Product:

PBS (PH 7.3) containing 1% BSA, 50% glycerol and 0.02% sodium azide.

### Molecular Weight:

99.8 kDa(Predicted)

### Swiss-Prot:

O75473

### Purification&Purity:

The antibody was affinity-purified from mouse antiserum by affinity-chromatography using epitope-specific immunogen and the purity is > 95% (by SDS-PAGE).

### Applications:

WB 1:500, IHC 1:150, IF 1:100, FLOW 1:100

### Storage&Stability:

Store at 4 °C short term. Aliquot and store at -20 °C long term. Avoid freeze-thaw cycles.

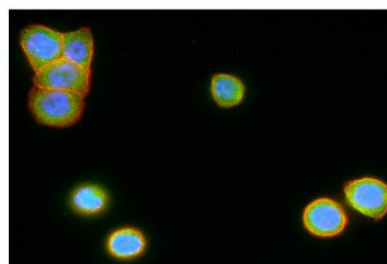
### Specificity:

LGR5 mAb detects endogenous levels of LGR5 protein.

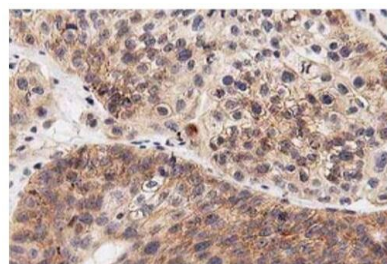
### DATA:



HEK293T cells were transfected with the pCMV6-ENTRY control (Left lane) or pCMV6-ENTRY LGR5 (Right lane) cDNA for 48 hrs and lysed.



Immunofluorescent staining of HT29 cells using anti-LGR5 mouse monoclonal antibody (green). Actin filaments were labeled with TRITC-phalloidin (red), and nuclear with DAPI (blue).



Immunohistochemical staining of paraffin-embedded Carcinoma of Human bladder tissue using anti-LGR5 mouse monoclonal antibody.

### Note:

For research use only, not for use in diagnostic procedure.

### Bioworld Technology, Inc.

Add: 1660 South Highway 100, Suite 500 St. Louis Park, MN 55416, USA.

Email: [info@bioworld.com](mailto:info@bioworld.com)

Tel: 6123263284

Fax: 6122933841

### Bioworld technology, co. Ltd.

Add: No 9, weidi road Qixia District Nanjing, 210046, P. R. China.

Email: [info@biogot.com](mailto:info@biogot.com)

Tel: 0086-025-68037686

Fax: 0086-025-68035151



## PRODUCT DATA SHEET

Bioworld Biotech Co., Ltd

---

---

### **Bioworld Technology, Inc.**

**Add:** 1660 South Highway 100, Suite 500 St. Louis Park,  
MN 55416, USA.

**Email:** [info@bioworld.com](mailto:info@bioworld.com)

**Tel:** 6123263284

**Fax:** 6122933841

### **Bioworld technology, co. Ltd.**

**Add:** No 9, weidi road Qixia District Nanjing, 210046,  
P. R. China.

**Email:** [info@biogot.com](mailto:info@biogot.com)

**Tel:** 0086-025-68037686

**Fax:** 0086-025-68035151