

EPCAM Mouse monoclonal antibody

Catalog: MB9010

Host: Mouse

Reactivity: Human,mouse

BackGround:

The epithelial cell adhesion molecule Ep-CAM, which is also design ated tumor-associated calcium signal transducer 1 and MK-1, is a monomeric membrane glycoprotein that is expressed in most normal human epithelium and in most carcinomas. The human Ep-CAM gene encodes a 314 amino acid protein that is expressed as two forms, a 40 kDa major form and a 42 kDa minor form, which are reduced to 35 kDa upon treatment with the aminoglycosylation inhibitor tunicamycin. Ep-CAM is overexpressed in a variety of carcinomas and is, therefore, a potential target for the visualization and therapy of human solid tumours. Ep-CAM contains an extracellular domain containing two epidermal growth factor-like repeats, followed by a cysteine-poor region, which are necessary for the adhesion properties of the molecule.

Product:

Mouse IgM, 1mg/ml in PBS with 0.02% sodium azide, 50% glycerol, pH7.2

Molecular Weight:

~ 40 kDa

Swiss-Prot:

P16422

Purification&Purity:

ProL affinity purified

Applications:

WB: 1:1000-1:2000 ICC: 1:100-1:200

IHC: 1:200-1:500 FC: 1:100-1:200

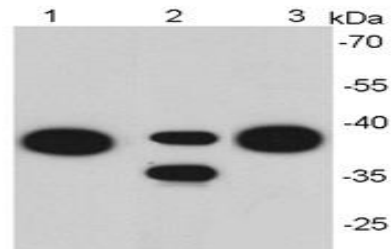
Storage&Stability:

Store at 4 °C short term. Aliquot and store at -20 °C long term. Avoid freeze-thaw cycles.

Specificity:

This antibody detects endogenous levels of EPCAM and does not cross-react with related proteins.

DATA:

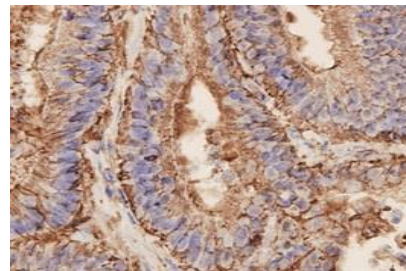


Western blot (WB) analysis of EPCAM Mouse mAb at 1:1000 dilution

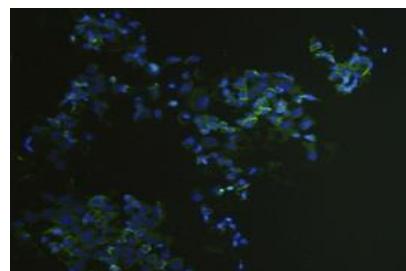
Lane1:HeLa whole cell lysate

Lane2:NIH/3T3 whole cell lysate

Lane3:MCF7 whole cell lysate



Immunohistochemical analysis of paraffin-embedded human colon carcinoma tissue using EpCAM antibody. Counter stained with hematoxylin.



ICC staining EpCAM in A431 cells (green). The nuclear counter stain is DAPI (blue). Cells were fixed in paraformaldehyde, permeabilised with 0.25% Triton *100/PBS.

Note:

For research use only, not for use in diagnostic procedure.

Bioworld Technology, Inc.

Add: 1660 South Highway 100, Suite 500 St. Louis Park, MN 55416, USA.

Email: info@bioworld.com

Tel: 6123263284

Fax: 6122933841

Bioworld technology, co. Ltd.

Add: No 9, weidi road Qixia District Nanjing, 210046, P. R. China.

Email: info@biogot.com

Tel: 0086-025-68037686

Fax: 0086-025-68035151