

Bmi1 Mouse monoclonal antibody

Catalog: MB9014

Host: Mouse

Reactivity: Human, Mouse, Rat

BackGround:

Bmi-1 has been identified as a potent oncogene as it contributes to the transcriptional activation of genes implicated in early lymphoid development. Proviral activation of Bmi-1 expression corresponds to enhanced gene-specific activation of other proto-oncogenes, including c-Myc and Pim, subsequently resulting in the progression of lymphomagenesis.

Product:

Mouse IgG2a, 1mg/ml in PBS with 0.02% sodium azide, 50% glycerol, pH7.2

Molecular Weight:

~ 37 kDa

Swiss-Prot:

P35226

Purification&Purity:

Protein A affinity purified

Applications:

WB: 1:1000

IHC/ICC: 1:100-1:200

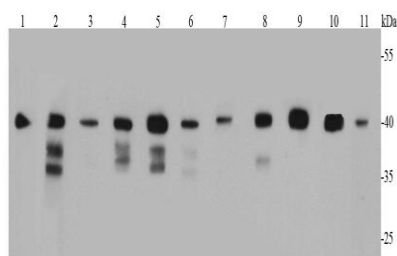
FC: 1:100-1:200

Storage&Stability:

Store at 4 °C short term. Aliquot and store at -20 °C long term. Avoid freeze-thaw cycles.

Specificity:

This antibody detects endogenous levels of Bmi1 and does not cross-react with related proteins.

DATA:

Western blot (WB) analysis of Bmi1 Mouse mAb at 1:1000 dilution

Lane1:293T whole cell lysate

Lane2:Jurkat whole cell lysate

Lane3:Hela whole cell lysate

Lane4:MCF7 whole cell lysate

Lane5:HepG2 whole cell lysate

Lane6:NIH/3T3 whole cell lysate

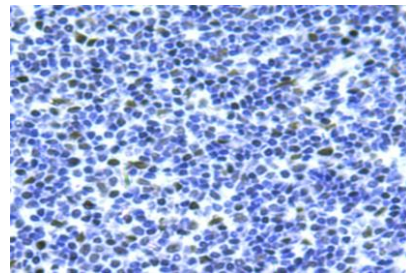
Lane7:PC12 whole cell lysate

Lane8:The kidney tissue lysate of Mouse

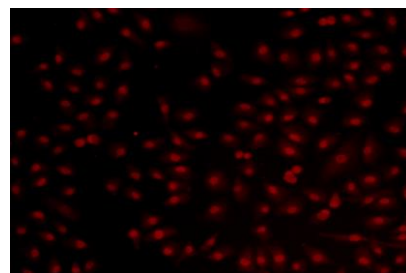
Lane9:The kidney tissue lysate of Human

Lane10:K562 whole cell lysate

Lane11:The brain tissue lysate of Human



Immunohistochemical analysis of paraffin-embedded human tonsil tissue using anti-Bmi1 antibody. Counter stained with hematoxylin.



ICC staining Bmi1 in A549 cells (red). Cells were fixed in paraformaldehyde, permeabilised with 0.25% Triton *100/PBS.

Note:

For research use only, not for use in diagnostic procedure.

Bioworld Technology, Inc.

Add: 1660 South Highway 100, Suite 500 St. Louis Park, MN 55416, USA.

Email: info@bioworld.com

Tel: 6123263284

Fax: 6122933841

Bioworld technology, co. Ltd.

Add: No 9, weidi road Qixia District Nanjing, 210046, P. R. China.

Email: info@biogot.com

Tel: 0086-025-68037686

Fax: 0086-025-68035151