

AFP monoclonal antibody

Catalog: MB9042

Host: Mouse

Reactivity: Human

Background:

α -fetoprotein (AFP) is expressed in fetal liver at varying levels throughout development and is present only in trace amounts in normal adult tissues. AFP can be detected at abnormally high concentrations in hepatocellular carcinomas as well as in the plasma and ascitic fluid of adults with hepatoma. High AFP concentrations have been correlated with tumor cell growth, indicating that AFP can serve as a tumor marker. AFP binds copper, nickel and fatty acids, and in some cases may bind serum albumin or estrogen. It has been demonstrated that the AFP promoter is a target for NF-1 (nuclear factor-1), HNF-1 (hepatocyte nuclear factor-1) and C/EBP transcription factors. While HNF-1 binding to the AFP promoter results in AFP expression, NF-1 binding results in a decrease in AFP promoter activity.

Product:

Mouse IgG1, 1mg/ml in PBS with 0.02% sodium azide, 50% glycerol, pH7.2

Molecular Weight:

68 kDa

Swiss-Prot:

P02771(Human)

Purification&Purity:

ProA affinity purified

Applications:

WB:1:500-1:2,000

ICC:1:50-1:200

IHC:1:50-1:200

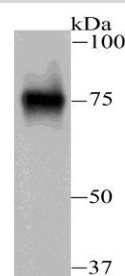
Storage&Stability:

Store at +4 °C after thawing. Aliquot store at -20 °C or -80 °C. Avoid repeated freeze / thaw cycles.

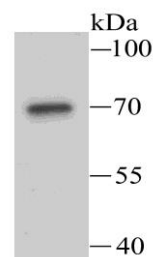
Specificity:

AFP monoclonal antibody detects endogenous levels of AFP protein.

DATA:



Western blot analysis of AFP on human placenta tissue lysate using anti-AFP antibody at 1/1,000 dilution.



Western blot analysis of AFP on HepG2 cell lysate using anti-AFP antibody at 1/1,000 dilution.

Note:

For research use only, not for use in diagnostic procedure.

Bioworld Technology, Inc.

Add: 1660 South Highway 100, Suite 500 St. Louis Park, MN 55416, USA.

Email: info@bioworld.com

Tel: 6123263284

Fax: 6122933841

Bioworld technology, co. Ltd.

Add: No 9, weidi road Qixia District Nanjing, 210046, P. R. China.

Email: info@biogot.com

Tel: 0086-025-68037686

Fax: 0086-025-68035151