

## BCL2 monoclonal antibody

Catalog: MB9086

Host: Mouse

Reactivity: Human

### BackGround:

Suppresses apoptosis in a variety of cell systems including factor-dependent lymphohematopoietic and neural cells. Regulates cell death by controlling the mitochondrial membrane permeability. Appears to function in a feedback loop system with caspases. Inhibits caspase activity either by preventing the release of cytochrome c from the mitochondria and/or by binding to the apoptosis-activating factor (APAF-1). May attenuate inflammation by impairing NLRP1-inflammasome activation, hence CASP1 activation and IL1B release.

### Product:

Mouse IgG1, 1mg/ml in PBS with 0.02% sodium azide, 50% glycerol, pH7.2

### Molecular Weight:

26 kDa

### Swiss-Prot:

P10415(Human)

### Purification&Purity:

Peptide affinity purified.

### Applications:

WB:1:500-1:1,000

IHC:1:500-1:1,000

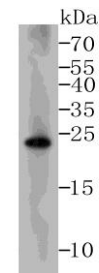
### Storage&Stability:

Store at +4 °C after thawing. Aliquot store at -20 °C. Avoid repeated freeze / thaw cycles.

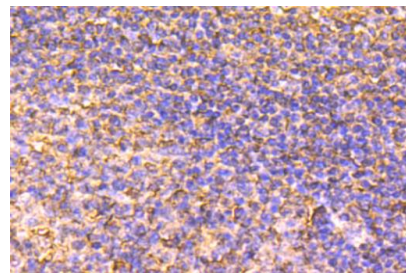
### Specificity:

BCL2 monoclonal antibody detects endogenous levels of BCL2 protein.

### DATA:



Western blot analysis of BCL2 on THP-1 lysate using anti-BCL2 antibody at 1/500 dilution.



Immunohistochemical analysis of paraffin-embedded human tonsil tissue using anti-BCL2 antibody. Counter stained with hematoxylin.

### Note:

For research use only, not for use in diagnostic procedure.

### Bioworld Technology, Inc.

Add: 1660 South Highway 100, Suite 500 St. Louis Park, MN 55416, USA.

Email: [info@bioworld.com](mailto:info@bioworld.com)

Tel: 6123263284

Fax: 6122933841

### Bioworld technology, co. Ltd.

Add: No 9, weidi road Qixia District Nanjing, 210046, P. R. China.

Email: [info@biogol.com](mailto:info@biogol.com)

Tel: 0086-025-68037686

Fax: 0086-025-68035151