

Bmi1 monoclonal antibody

Catalog: MB9093

Host: Mouse

Reactivity: Human, Mouse, Rat

BackGround:

The Bmi-1 was identified initially as an oncogene that cooperates with c-myc in the generation of B-cell lymphoma. It contributes to the maintenance of cell identity, stem cell self-renewal, cell cycle regulation, and oncogenesis by maintaining the silenced state of genes that promote cell lineage specification, cell death, and cell-cycle arrest.

Product:

Mouse IgG2a, 1mg/ml in PBS with 0.02% sodium azide, 50% glycerol, pH7.2

Molecular Weight:

37kDa

Swiss-Prot:

P35226(Human) P25916(Mouse)

Purification&Purity:

ProA affinity purified

Applications:

WB:1:1,000

IHC:1:200

ICC:1:200

FC:1:100-1:200

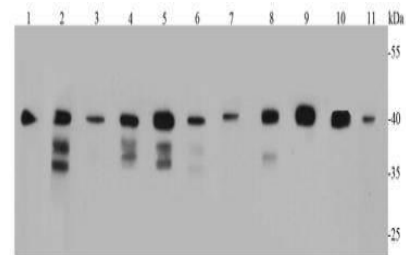
Storage&Stability:

Store at +4 °C after thawing. Aliquot store at -20 °C. Avoid repeated freeze / thaw cycles.

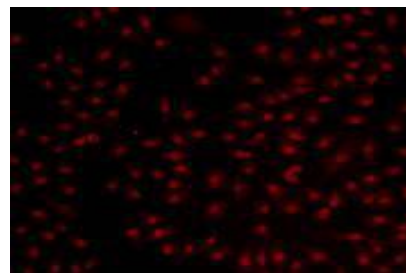
Specificity:

Bmi1 monoclonal antibody detects endogenous levels of Bmi1 protein.

DATA:



Western blot analysis of Bmi1 on different lysates using anti-Bmi1 antibody at 1/1,000 dilution. Positive control: Lane 1: 293T Lane 2: Jurkat Lane 3: HeLa Lane 4: MCF-7 Lane 5: HepG2 Lane 6: NIH/3T3 Lane 7: PC12 Lane 8: Mouse kidney Lane 9: Human kidney Lane 10: K562 Lane 11: Human brain



ICC staining Bmi1 in A549 cells (red). Cells were fixed in paraformaldehyde, permeabilised with 0.25% Triton X100/PBS.

Note:

For research use only, not for use in diagnostic procedure.

Bioworld Technology, Inc.

Add: 1660 South Highway 100, Suite 500 St. Louis Park, MN 55416, USA.

Email: info@bioworld.com

Tel: 6123263284

Fax: 6122933841

Bioworld technology, co. Ltd.

Add: No 9, weidi road Qixia District Nanjing, 210046, P. R. China.

Email: info@biogot.com

Tel: 0086-025-68037686

Fax: 0086-025-68035151