

CD47 monoclonal antibody

Catalog: MB9138

Host: Mouse

Reactivity: Human, Mouse

BackGround:

CD47 is an integral membrane protein that plays a role in the regulation of cation fluxes across cell membranes. Specifically, CD47 is involved in the increase in intracellular calcium concentration that occurs upon cell adhesion to the extracellular matrix. It is also a receptor for the C-terminal cell binding domain of thrombospondin (SIRP). CD47 is absent from Rh-null erythrocytes, but does play a role in cell adhesion in non-erythroid cells and may prevent premature elimination of erythrocytes. It may also be involved in membrane permeability changes following viral infection. CD47 is expressed on hemopoietic cells, epithelial cells, endothelial cells and fibroblasts and is strongly expressed in brain and mesenchymal cells.

Product:

Mouse IgM, 1mg/ml in PBS with 0.02% sodium azide, 50% glycerol, pH7.2

Molecular Weight:

35 kDa

Swiss-Prot:

Q08722(Human) Q61735(Mouse)

Purification&Purity:

ProG affinity purified.

Applications:

ICC:1:50-1:100

ICC:1:50-1:200

FC:1:50-1:100

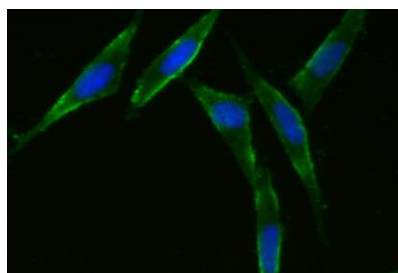
Storage&Stability:

Store at +4 °C after thawing. Aliquot store at -20 °C or -80 °C. Avoid repeated freeze / thaw cycles.

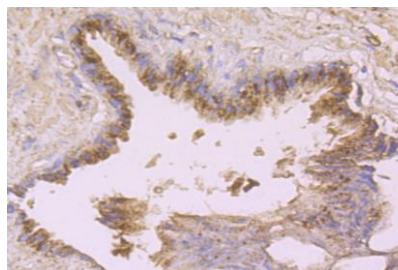
Specificity:

CD47 monoclonal antibody detects endogenous levels of CD47 protein.

DATA:



ICC staining CD47 (green) in SH-SY5Y cells. The nuclear counter stain is DAPI (blue). Cells were fixed in paraformaldehyde, permeabilised with 0.25% Triton X100/PBS.



Immunohistochemical analysis of paraffin-embedded human pancreas tissue using anti-CD47 antibody. Counter stained with hematoxylin.

Note:

For research use only, not for use in diagnostic procedure.

Bioworld Technology, Inc.

Add: 1660 South Highway 100, Suite 500 St. Louis Park, MN 55416, USA.

Email: info@bioworld.com

Tel: 6123263284

Fax: 6122933841

Bioworld technology, co. Ltd.

Add: No 9, weidi road Qixia District Nanjing, 210046, P. R. China.

Email: info@biogot.com

Tel: 0086-025-68037686

Fax: 0086-025-68035151