

GRB2 monoclonal antibody

Catalog: MB9247

Host: Mouse

Reactivity: Human, Mouse, Rat

BackGround:

Growth factor receptor-bound protein 2 also known as Grb2 is an adaptor protein involved in signal transduction/cell communication. In humans, the GRB2 protein is encoded by the GRB2 gene. The protein encoded by this gene binds receptors such as the epidermal growth factor receptor and contains one SH2 domain and two SH3 domains. Its two SH3 domains direct complex formation with proline-rich regions of other proteins, and its SH2 domain binds tyrosine phosphorylated sequences. This gene is similar to the sem-5 gene of *Caenorhabditis elegans*, which is involved in the signal transduction pathway.

Product:

Mouse IgG2b, 1mg/ml in PBS with 0.02% sodium azide, 50% glycerol, pH7.2

Molecular Weight:

25 kDa

Swiss-Prot:

P62993(Human) Q60631(Mouse) P62994(Rat)

Purification&Purity:

ProG affinity purified

Applications:

WB:1:500-1:1,000

ICC:1:50-1:200

IHC:1:50-1:200

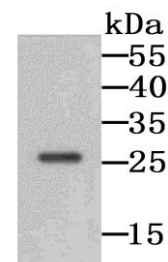
Storage&Stability:

Store at +4 °C after thawing. Aliquot store at -20 °C or -80 °C. Avoid repeated freeze / thaw cycles.

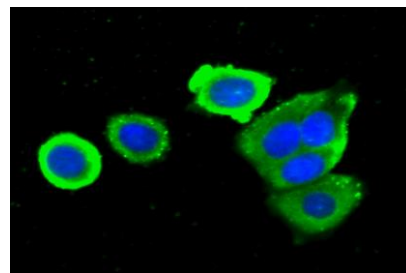
Specificity:

GRB2 monoclonal antibody detects endogenous levels of GRB2 protein.

DATA:



Western blot analysis of GRB2 on 293 cell lysate using anti-GRB2 antibody at 1/1,000 dilution.



ICC staining GRB2 (green) in MCF-7 cells. The nuclear counter stain is DAPI (blue). Cells were fixed in paraformaldehyde, permeabilised with 0.25% Triton X100/PBS.

Note:

For research use only, not for use in diagnostic procedure.

Bioworld Technology, Inc.

Add: 1660 South Highway 100, Suite 500 St. Louis Park, MN 55416, USA.

Email: info@bioworld.com

Tel: 6123263284

Fax: 6122933841

Bioworld technology, co. Ltd.

Add: No 9, weidi road Qixia District Nanjing, 210046, P. R. China.

Email: info@biogot.com

Tel: 0086-025-68037686

Fax: 0086-025-68035151