

Insulin monoclonal antibody

Catalog: MB9307

Host: Mouse

Reactivity: Human, mouse, rat

BackGround:

Insulin is a hormone with extensive effects on both metabolism and several other body systems. It causes most of the body's cells to take up glucose from the blood (including liver, muscle, and fat tissue cells), storing it as glycogen in the liver and muscle, and stops use of fat as an energy source. Insulin is synthesized as a precursor molecule, proinsulin, which is processed prior to its secretion. A- and B-peptides are joined together by a disulfide bond to form insulin, while the central portion of the precursor molecule is cleaved and released as the C-peptide.

Product:

Mouse IgG1, 1mg/ml in PBS with 0.02% sodium azide, 50% glycerol, pH7.2

Molecular Weight:

12 kDa

Swiss-Prot:

P01308

Purification&Purity:

ProA affinity purified

Applications:

IHC:1:100-1:1,000

ELISA:1:10,000

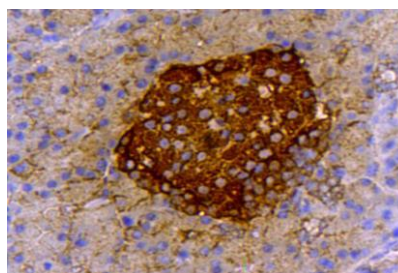
Storage&Stability:

Store at +4 °C after thawing. Aliquot store at -20 °C or -80 °C. Avoid repeated freeze / thaw cycles.

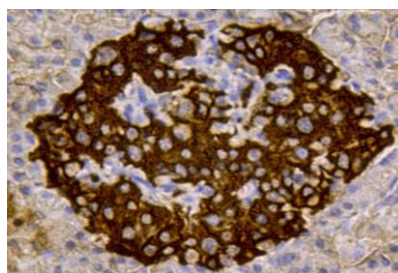
Specificity:

Insulin monoclonal antibody detects endogenous levels of Insulin protein.

DATA:



Immunohistochemical analysis of paraffin-embedded rat pancreas tissue using anti-Insulin antibody. Counter stained with hematoxylin.



Immunohistochemical analysis of paraffin-embedded human pancreas tissue using anti-Insulin antibody. Counter stained with hematoxylin.

Note:

For research use only, not for use in diagnostic procedure.

Bioworld Technology, Inc.

Add: 1660 South Highway 100, Suite 500 St. Louis Park, MN 55416, USA.

Email: info@bioworld.com

Tel: 6123263284

Fax: 6122933841

Bioworld technology, co. Ltd.

Add: No 9, weidi road Qixia District Nanjing, 210046, P. R. China.

Email: info@biogot.com

Tel: 0086-025-68037686

Fax: 0086-025-68035151