

LNP monoclonal antibody

Catalog: MB9343

Host: Mouse

Reactivity: Human, Mouse, Rat

BackGround:

Endoplasmic reticulum (ER)-shaping membrane protein that plays a role in determining ER morphology. Involved in the stabilization of nascent three-way ER tubular junctions within the ER network. May also play a role as a curvature-stabilizing protein within three-way ER tubular junction network. May be involved in limb and central nervous system development

Product:

Mouse IgG1, 1mg/ml in PBS with 0.02% sodium azide, 50% glycerol, pH7.2

Molecular Weight:

47 kDa

Swiss-Prot:

Q9C0E8(Human) Q7TQ95(Mouse) A0JN29(Rat)

Purification&Purity:

ProG affinity purified

Applications:

ICC:1:50-1:200

IHC:1:50-1:200

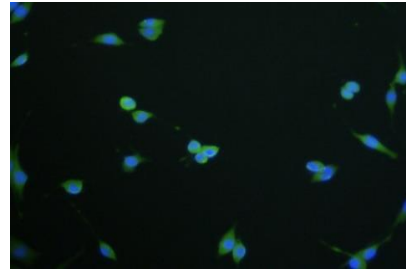
Storage&Stability:

Store at +4 °C after thawing. Aliquot store at -20 °C or -80 °C. Avoid repeated freeze / thaw cycles.

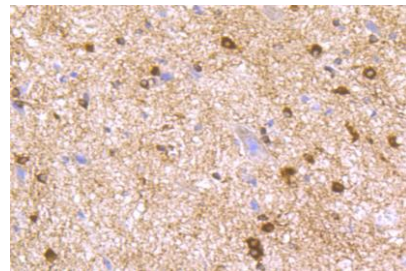
Specificity:

LNP monoclonal antibody detects endogenous levels of LNP protein.

DATA:



ICC staining LNP (green) in SHG-44 cells. The nuclear counter stain is DAPI (blue). Cells were fixed in paraformaldehyde, permeabilised with 0.25% Triton X100/PBS.



Immunohistochemical analysis of paraffin-embedded rat spinal cord tissue using anti-LNP antibody. Counter stained with hematoxylin.

Note:

For research use only, not for use in diagnostic procedure.

Bioworld Technology, Inc.

Add: 1660 South Highway 100, Suite 500 St. Louis Park, MN 55416, USA.

Email: info@bioworld.com

Tel: 6123263284

Fax: 6122933841

Bioworld technology, co. Ltd.

Add: No 9, weidi road Qixia District Nanjing, 210046, P. R. China.

Email: info@biogot.com

Tel: 0086-025-68037686

Fax: 0086-025-68035151