

MTERFD1 monoclonal antibody

Catalog: MB9372

Host: Mouse

Reactivity: Human, Mouse

BackGround:

MTERFD1 belongs to the MTERF family which consists of four members including MTERF1, MTERF2, MTERF3 and MTERF4. Previous research showed that MTERFD1 is a mitochondrial protein that interacts with the mitochondrial DNA promoter region and decreases transcription initiation in mammalian mitochondria. This negative regulation is likely important for fine-tuning mitochondria transcription in response to physiological demands. Human mitochondrial transcription termination factor domain 1 (MTERFD1) was mutated in many types of cancer. In vivo and in vitro data indicated that MTERFD1 gene possesses oncogenic properties.

Product:

Mouse IgG1, 1mg/ml in PBS with 0.02% sodium azide, 50% glycerol, pH7.2

Molecular Weight:

48/38 kDa

Swiss-Prot:

Q96E29(Human) Q8R3J4(Mouse)

Purification&Purity:

ProA affinity purified

Applications:

WB:1:1,000-1:2,000

IHC:1:50-1:200

ICC:1:50

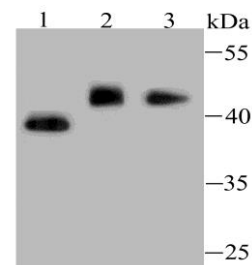
Storage&Stability:

Store at +4 °C after thawing. Aliquot store at -20 °C or -80 °C. Avoid repeated freeze / thaw cycles.

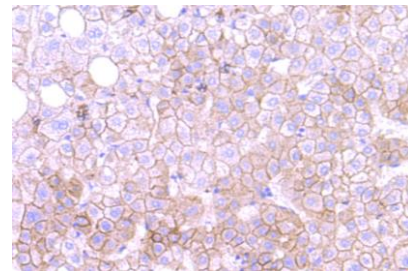
Specificity:

MTERFD1 monoclonal antibody detects endogenous levels of MTERFD1 protein.

DATA:



Western blot analysis of MTERFD1 on different lysates using anti-MTERFD1 antibody at 1/1,000 dilution. Positive control: Lane1: Hela Lane2: Mouse kidney tissue Lane3: K562



Immunohistochemical analysis of paraffin-embedded human liver tissue using anti-MTERFD1 antibody. Counter stained with hematoxylin.

Note:

For research use only, not for use in diagnostic procedure.

Bioworld Technology, Inc.

Add: 1660 South Highway 100, Suite 500 St. Louis Park, MN 55416, USA.

Email: info@bioworld.com

Tel: 6123263284

Fax: 6122933841

Bioworld technology, co. Ltd.

Add: No 9, weidi road Qixia District Nanjing, 210046, P. R. China.

Email: info@biogot.com

Tel: 0086-025-68037686

Fax: 0086-025-68035151