

PLEKHH1 monoclonal antibody

Catalog: MB9433

Host: Mouse

Reactivity: Human, Mouse

BackGround:

PLEKHH1 (Pleckstrin Homology, MyTH4 And FERM Domain Containing H1) is a Protein Coding gene. Diseases associated with PLEKHH1 include Gestational Trophoblastic Neoplasm. Critical component of the guidance pathway underlying endothelial cell migration and blood vessel patterning. Involved in mediating membrane localization of ephrin proteins, which have been shown to provide guidance cues for endothelial cell migration.

Product:

Mouse IgG2b, 1mg/ml in PBS with 0.02% sodium azide, 50% glycerol, pH7.2

Molecular Weight:

151/30 kDa

Swiss-Prot:

Q9ULM0(Human)

Purification&Purity:

ProG affinity purified

Applications:

WB:1:500

ICC:1:50

IHC:1:50-1:200

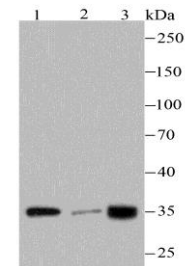
Storage&Stability:

Store at +4 °C after thawing. Aliquot store at -20 °C or -80 °C. Avoid repeated freeze / thaw cycles.

Specificity:

PLEKHH1 monoclonal antibody detects endogenous levels of PLEKHH1 protein.

DATA:



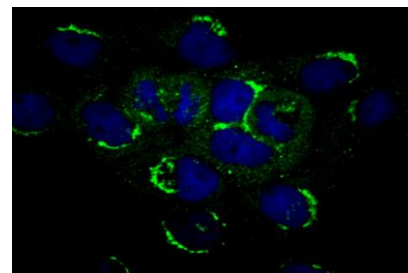
Western blot analysis of PLEKHH1 on different cell lysates using anti-PLEKHH1 antibody at 1/100 dilution.

Positive control:

Lane 1: MCF-7

Lane 2: A431

Lane 3: SH-SY5Y



ICC staining PLEKHH1 (green) in A431 cells. The nuclear counter stain is DAPI (blue). Cells were fixed in paraformaldehyde, permeabilised with 0.25% Triton X100/PBS.

Note:

For research use only, not for use in diagnostic procedure.

Bioworld Technology, Inc.

Add: 1660 South Highway 100, Suite 500 St. Louis Park, MN 55416, USA.

Email: info@bioworld.com

Tel: 6123263284

Fax: 6122933841

Bioworld technology, co. Ltd.

Add: No 9, weidi road Qixia District Nanjing, 210046, P. R. China.

Email: info@biogot.com

Tel: 0086-025-68037686

Fax: 0086-025-68035151