

## Ribonuclease 3 monoclonal antibody

Catalog: MB9483

Host: Mouse

Reactivity: Human

### BackGround:

The protein encoded by this gene belongs to the pancreatic ribonuclease family, a subset of the ribonuclease A superfamily. Cytotoxin and helminthotoxin with low-efficiency ribonuclease activity. The protein exhibits antimicrobial activity against pathogenic bacteria. Exhibits antibacterial activity, including cytoplasmic membrane depolarization of preferentially Gram-negative, but also Gram-positive strains. Promotes E.coli outer membrane detachment, alteration of the overall cell shape and partial loss of cell content. ECP is a potent cytotoxic protein capable of killing cells of guinea pig tracheal epithelium, mammalian leukemia, epidermis carcinoma, and breast carcinoma, as well as non-mammalian cells such as parasites, bacteria, and viruses. Mature ECP is cytotoxic to human bronchial epithelial (BEAS-2B) cells by specific binding to cell surface heparan sulfate proteoglycans (HSPGs) followed by endocytosis. ECP triggers apoptosis by caspase-8 activation through mitochondria-independent pathway. Increases in chromatin condensation, sub-G1 population, PARP cleavage, and DNA fragmentation indicate that ECP induces apoptosis in human bronchial epithelial (BEAS-2B) cells.

### Product:

Mouse IgG1, 1mg/ml in PBS with 0.02% sodium azide, 50% glycerol, pH7.2

### Molecular Weight:

18 kDa

### Swiss-Prot:

P12724 Human

### Purification&Purity:

Protein G purified.

### Applications:

WB:1:500-1:2000

ICC:1:100

IHC:1:50-1:200

FC:1:50-1:100

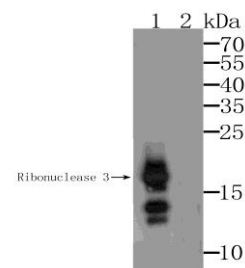
### Storage&Stability:

Store at +4°C after thawing. Aliquot store at -20°C. Avoid repeated freeze / thaw cycles.

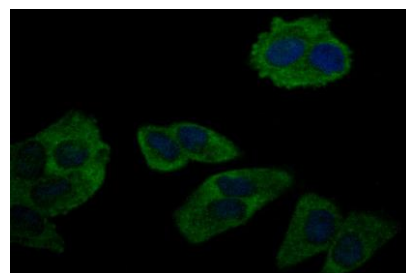
### Specificity:

Ribonuclease 3 monoclonal antibody detects endogenous levels of Ribonuclease 3 protein.

### DATA:



Western blot analysis of Ribonuclease 3 on U937 cell lysate. Proteins were transferred to a PVDF membrane and blocked with 5% BSA in PBS for 1 hour at room temperature. The primary antibody was used at a 1:500 dilution in 5% BSA at room temperature for 2 hours. Goat Anti-Mouse IgG - HRP Secondary Antibody (HA1006) at 1:5,000 dilution was used for 1 hour at room temperature. Lane 1: Anti-Ribonuclease 3 Antibody, (1:500). Lane 2: Anti-Ribonuclease 3 Antibody, (1:500), pre-incubated with the immunization protein.



ICC staining Ribonuclease 3 in HeLa cells (green). Formalin fixed cells were permeabilized with 0.1% Triton X-100 in TBS for 10 minutes at room temperature and blocked with 1% Blocker BSA for 15 minutes at room temperature. Cells were probed with Ribonuclease 3 monoclonal antibody at a dilution of 1:50 for 1 hour at room temperature, washed with PBS. Alexa Fluor &trade; 488 Goat anti-Mouse IgG was used as

### Bioworld Technology, Inc.

Add: 1660 South Highway 100, Suite 500 St. Louis Park, MN 55416, USA.

Email: [info@bioworld.com](mailto:info@bioworld.com)

Tel: 6123263284

Fax: 6122933841

### Bioworld technology, co. Ltd.

Add: No 9, weidi road Qixia District Nanjing, 210046, P. R. China.

Email: [info@biogot.com](mailto:info@biogot.com)

Tel: 0086-025-68037686

Fax: 0086-025-68035151



## PRODUCT DATA SHEET

Bioworld Technology, Inc.

the secondary antibody at 1/100 dilution. The nuclear counter stain is DAPI (blue).

**Note:**

For research use only, not for use in diagnostic procedure.

---

**Bioworld Technology, Inc.**

Add: 1660 South Highway 100, Suite 500 St. Louis Park,  
MN 55416, USA.

Email: [info@bioworld.com](mailto:info@bioworld.com)

Tel: 6123263284

Fax: 6122933841

**Bioworld technology, co. Ltd.**

Add: No 9, weidi road Qixia District Nanjing, 210046,  
P. R. China.

Email: [info@biogot.com](mailto:info@biogot.com)

Tel: 0086-025-68037686

Fax: 0086-025-68035151