

pFastBac™ 1-CD35(494-737aa)-His6

Cat No.: PPL00055-2a

Quantity: Please refer to the label (tube)

Gene/insert name: CD35

Insert size: 732bp

Species: Homo sapiens (human)

Gene ID: 1378

Accessions: NM_000651.4

Vector backbone: pFastBac™1

Tag: His(C-term)

Backbone manufacturer: Invitrogen

Vector type: Insect Expression

Backbone size w/o insert: 4775bp

Cloning site 5': Not I

Site destroyed during cloning: NO

Cloning site 3': Xho I

Site destroyed during cloning: NO

Bacterial resistance(s): Ampicillin

Growth strain(s): DH5alpha

Growth temperature: 37 °C

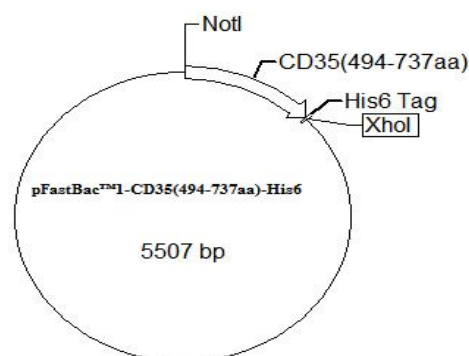
High or low copy: High Copy

Selectable markers: Gentamicin

Plasmid description: Insect Expression vector of Homo sapiens complement C3b/C4b receptor 1 (Knops blood group) (494-737aa)

Alt name: CR1; KN; C3BR; C4BR; CD35

Map:



Buffer :

Sterile distilled water.

Storage:

The product at -20°C for up to 24 months.

Note:

For research use only, not for use in diagnostic procedure.