

pET28a-AKR1B1

Cat No.: PPL00220-1a

Quantity: Please refer to the label (tube)

Gene/insert name: AKR1B1

Insert size: 951bp

Species: Homo sapiens (human)

Gene ID: 231

Accessions: BC000260

Vector backbone: pET-28a(+)

Tag: His(N-term)

Backbone manufacturer: Novagen

Vector type: E. coli Expression

Backbone size w/o insert: 5369bp

Cloning site 5': Nde I

Site destroyed during cloning: NO

Cloning site 3': Hind III

Site destroyed during cloning: NO

Bacterial resistance(s): Kanamycin

Growth strain(s): DH5alpha

Growth temperature: 37 °C

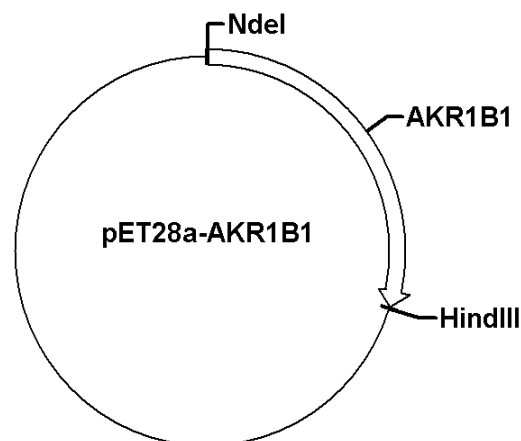
High or low copy: Low Copy

Selectable markers: None

Plasmid description: E. coli Expression vector of Homo sapiens aldo-keto reductase family 1 member B with N terminal 6xHis tag

Alt name: ADR,AR,MGC180

Map:



Buffer :

Sterile distilled water.

Storage:

The product at -20°C for up to 24 months.

Note:

For research use only, not for use in diagnostic procedure.