

pET28a-ATG14(152-406aa)

Cat No.: PPL00331-1a

Quantity: Please refer to the label (tube)

Gene/insert name: ATG14(152-406aa)

Insert size: 765bp

Species: Homo sapiens (human)

Gene ID: 22863

Accessions: BC109090

Vector backbone: pET-28a(+)

Tag: His(N-term)

Backbone manufacturer: Novagen

Vector type: E. coli Expression

Backbone size w/o insert: 5369bp

Cloning site 5': BamH I

Site destroyed during cloning: NO

Cloning site 3': Sal I

Site destroyed during cloning: NO

Bacterial resistance(s): Kanamycin

Growth strain(s): Top10

Growth temperature: 37 °C

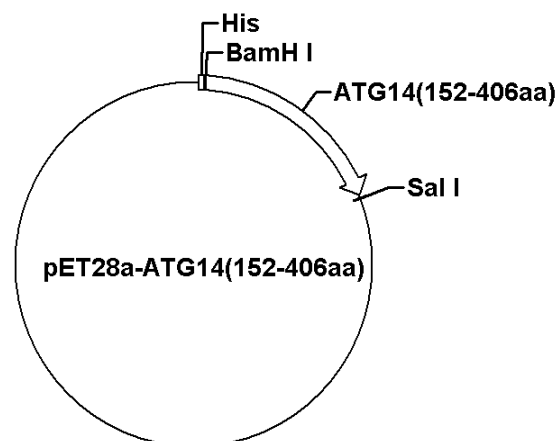
High or low copy: Low Copy

Selectable markers: None

Plasmid description: E. coli Expression vector of Homo sapiens autophagy related 14(152-406aa) with N terminal 6xHis tag

Alt name: ATG14L; BARKOR; KIAA0831

Map:



Buffer :

Sterile distilled water.

Storage:

The product at -20°C for up to 24 months.

Note:

For research use only, not for use in diagnostic procedure.