

## pBABE-Puro-Sam68

Cat No.: PPL00471-4a

Quantity: Please refer to the label (tube)

**Gene/insert name:** Sam68

**Insert size:** 1332bp

**Species:** Homo sapiens (human)

**Gene ID:** 10657

**Accessions:** BC019109

**Vector backbone:** pBABE-puro

**Tag:** HA(C-term)

**Backbone manufacturer:** Addgene

**Vector type:** Mammalian Expression, Retroviral

**Backbone size w/o insert:** 5169bp

**Cloning site 5':** EcoR I

**Site destroyed during cloning:** NO

**Cloning site 3':** Sal I

**Site destroyed during cloning:** NO

**Bacterial resistance(s):** Ampicillin

**Growth strain(s):** Stb13

**Growth temperature:** 37 °C

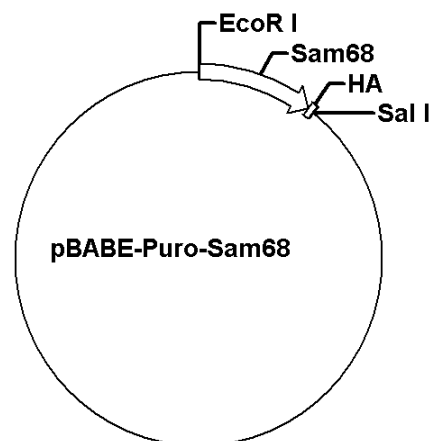
**High or low copy:** High Copy

**Selectable markers:** Puromycin

**Plasmid description:** Retroviral Expression vector of Homo sapiens KH RNA binding domain containing, signal transduction associated 1 with C terminal HA tag

**Alt name:** p62; p68; KHDRBS1

**Map:**



**Buffer :**

Sterile distilled water.

**Storage:**

The product at -20°C for up to 24 months.

**Note:**

For research use only, not for use in diagnostic procedure.