

## pET28a-MAPKAPK5

Cat No.: PPL00613-1a

Quantity: Please refer to the label (tube)

**Gene/insert name:** MAPKAPK5

**Insert size:** 1413bp

**Species:** Homo sapiens (human)

**Gene ID:** 8550

**Accessions:** BC041049

**Vector backbone:** pET-28a(+)

**Tag:** His(N-term)

**Backbone manufacturer:** Novagen

**Vector type:** E. coli Expression

**Backbone size w/o insert:** 5369bp

**Cloning site 5':** EcoR I

**Site destroyed during cloning:** NO

**Cloning site 3':** Not I

**Site destroyed during cloning:** NO

**Bacterial resistance(s):** Kanamycin

**Growth strain(s):** Top10

**Growth temperature:** 37 °C

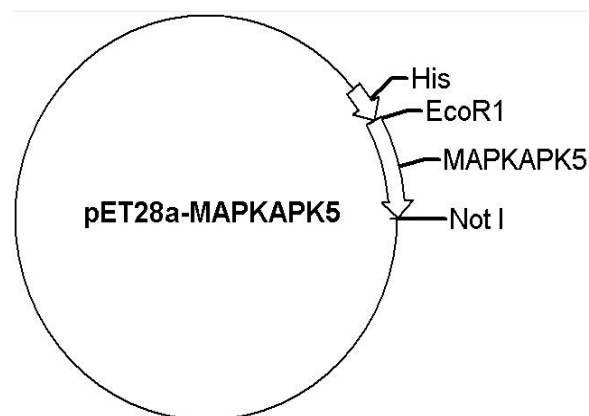
**High or low copy:** Low Copy

**Selectable markers:** None

**Plasmid description:** E. coli Expression vector of Homo sapiens mitogen-activated protein kinase-activated protein kinase 5 with N terminal 6xHis tag

**Alt name:** MK5; MK-5; PRAK; MAPKAP-K5

**Map:**



**Buffer :**

Sterile distilled water.

**Storage:**

The product at -20°C for up to 24 months.

**Note:**

For research use only, not for use in diagnostic procedure.