

## pCMV-Myc-CDC5L

Cat No.: PPL00666-2a

Quantity: Please refer to the label (tube)

**Gene/insert name:** CDC5L

**Insert size:** 2409bp

**Species:** Homo sapiens (human)

**Gene ID:** 988

**Accessions:** BC001568.1

**Vector backbone:** pCMV-Myc

**Tag:** Myc(N-term)

**Backbone manufacturer:** Clontech

**Vector type:** Mammalian Expression

**Backbone size w/o insert:** 3800bp

**Cloning site 5':** Sal I

**Site destroyed during cloning:** NO

**Cloning site 3':** Not I

**Site destroyed during cloning:** NO

**Bacterial resistance(s):** Ampicillin

**Growth strain(s):** Top10

**Growth temperature:** 37 °C

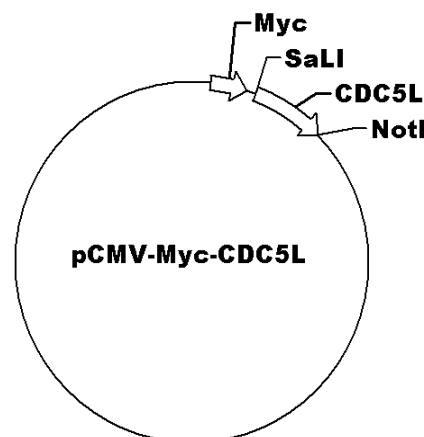
**High or low copy:** High Copy

**Selectable markers:** None

**Plasmid description:** Mammalian Expression vector of Homo sapiens cell division cycle 5 like with N terminal Myc tag

**Alt name:** CDC5; CEF1; PCDC5RP; CDC5-LIKE; dJ319D22.1

**Map:**



**Buffer :**

Sterile distilled water.

**Storage:**

The product at -20°C for up to 24 months.

**Note:**

For research use only, not for use in diagnostic procedure.