

pCMV-HA-RIPK3

Cat No.: PPL00720-2a

Quantity: Please refer to the label (tube)

Gene/insert name: RIPK3

Insert size: 1557bp

Species: Homo sapiens (human)

Gene ID: 11035

Accessions: BC062584.1

Vector backbone: pCMV-HA

Tag: HA(N-term)

Backbone manufacturer: Clontech

Vector type: Mammalian Expression

Backbone size w/o insert: 3800bp

Cloning site 5': Bgl II

Site destroyed during cloning: NO

Cloning site 3': Not I

Site destroyed during cloning: NO

Bacterial resistance(s): Ampicillin

Growth strain(s): Top10

Growth temperature: 37 °C

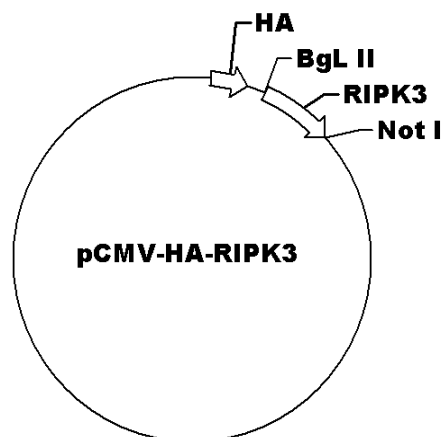
High or low copy: High Copy

Selectable markers: None

Plasmid description: Mammalian Expression vector of Homo sapiens receptor interacting serine/threonine kinase 3 with N terminal HA tag

Alt name: RIP3

Map:



Buffer :

Sterile distilled water.

Storage:

The product at -20°C for up to 24 months.

Note:

For research use only, not for use in diagnostic procedure.