

pcDNA3.1-AP2B1-V5-His

Cat No.: PPL01149-2a

Quantity: Please refer to the label (tube)

Gene/insert name: AP2B1

Insert size: 2856bp

Species: Homo sapiens (human)

Gene ID: 163

Accessions: NM_001030006.1

Vector backbone: pcDNA3.1-V5-His B

Tag: V5(C-term);His(C-term)

Backbone manufacturer: Invitrogen

Vector type: Mammalian Expression

Backbone size w/o insert: 5500bp

Cloning site 5': Kpn I

Site destroyed during cloning: NO

Cloning site 3': Not I

Site destroyed during cloning: NO

Bacterial resistance(s): Ampicillin

Growth strain(s): Top10

Growth temperature: 37 °C

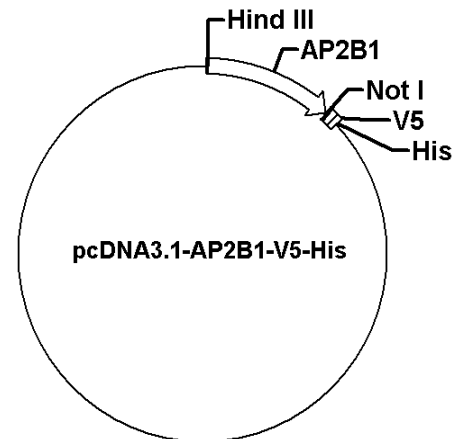
High or low copy: High Copy

Selectable markers: Neomycin

Plasmid description: Mammalian Expression vector of Homo sapiens adaptor related protein complex 2 beta 1 subunit with C terminal V5 and 6xHis tag

Alt name: ADTB2; AP105B; CLAPB1; AP2-BETA

Map:



Buffer :

Sterile distilled water.

Storage:

The product at -20°C for up to 24 months.

Note:

For research use only, not for use in diagnostic procedure.