

## pcDNA3.1-MRE11A-V5-His

Cat No.: PPL01151-2a

Quantity: Please refer to the label (tube)

**Gene/insert name:** MRE11A

**Insert size:** 2127bp

**Species:** Homo sapiens (human)

**Gene ID:** 4361

**Accessions:** BC063458

**Vector backbone:** pcDNA3.1-V5-His B

**Tag:** V5(C-term);His(C-term)

**Backbone manufacturer:** Invitrogen

**Vector type:** Mammalian Expression

**Backbone size w/o insert:** 5500bp

**Cloning site 5':** Kpn I

**Site destroyed during cloning:** NO

**Cloning site 3':** Not I

**Site destroyed during cloning:** NO

**Bacterial resistance(s):** Ampicillin

**Growth strain(s):** Top10

**Growth temperature:** 37 °C

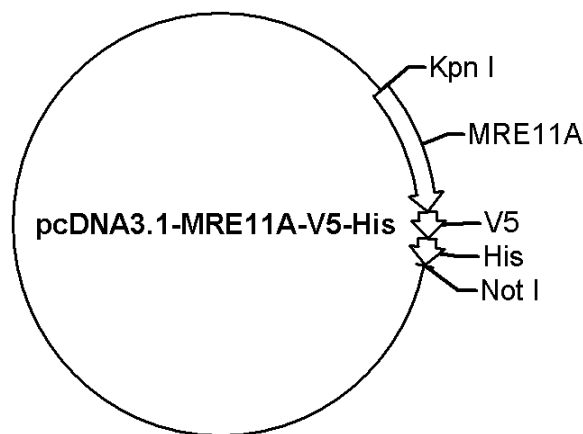
**High or low copy:** High Copy

**Selectable markers:** Neomycin

**Plasmid description:** Mammalian Expression vector of Homo sapiens MRE11 homolog, double strand break repair nuclease with C terminal V5 and 6xHis tag

**Alt name:** ATLD;HNGS1;MRE11B

**Map:**



**Buffer :**

Sterile distilled water.

**Storage:**

The product at -20°C for up to 24 months.

**Note:**

For research use only, not for use in diagnostic procedure.